

Data Sheet

Infraon OSS

Customer-Centric Digital OSS System

High-Scale and Customized Products for All Telecommunication Networks

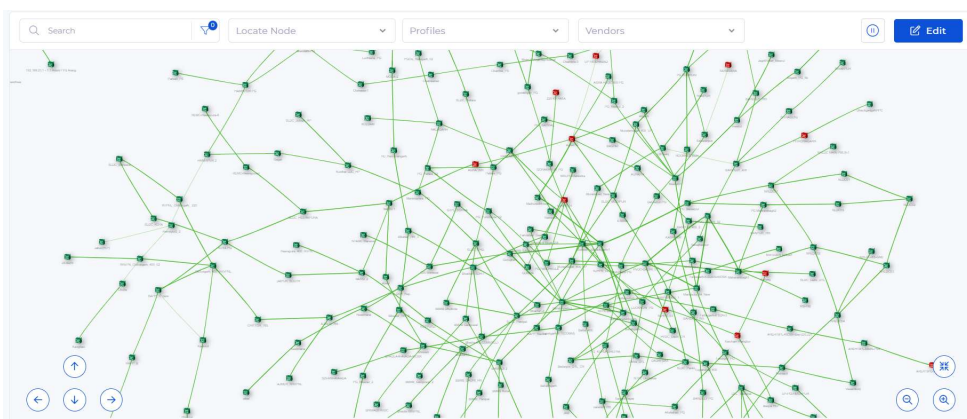
Overview

Unified Inventory, Fault, Performance, Configuration, and Accounts (FCAPS) Management of heterogeneous digital infrastructure with advanced forecasting, root-cause analysis, and business process analysis.

An all-in-one OSS Solution for administering, operating, monitoring, and provisioning multi-vendor, multi-technologies that cater to Telecom network operations covering transport, transmission, packet core, distributed, access, and communication networks, and ISPs providing FTTH services.

Key Highlights

- Web-based GUI for easy access with no client installations required
- Multi-browser support spanning Chrome, Firefox, Safari, Opera, Microsoft Edge (Latest)
- Centralized NOC Operations Support as per eTOM Guidelines & ITU-T standards
- Unified Monitoring and Management of IP/MPLS, SDH, DWDM, OTN, PTN, ASON, GPON, DCN, VSAT & RF, IOT, Voice & Video Collaborations
- Integrates with 3rd party authentication applications like RADIUS, TACACS, Active Directory, & LDAP
- Agentless deployments using industry-standard protocols
- Easy adaptation to new devices, applications, EMS/NMS
- Centralized and remote secured access, Open-source environment supported deployment
- Modular and distributed architecture
- Role-based access control (RBAC) with complete audit trail of all user operations
- Comes with AES 256 encryption



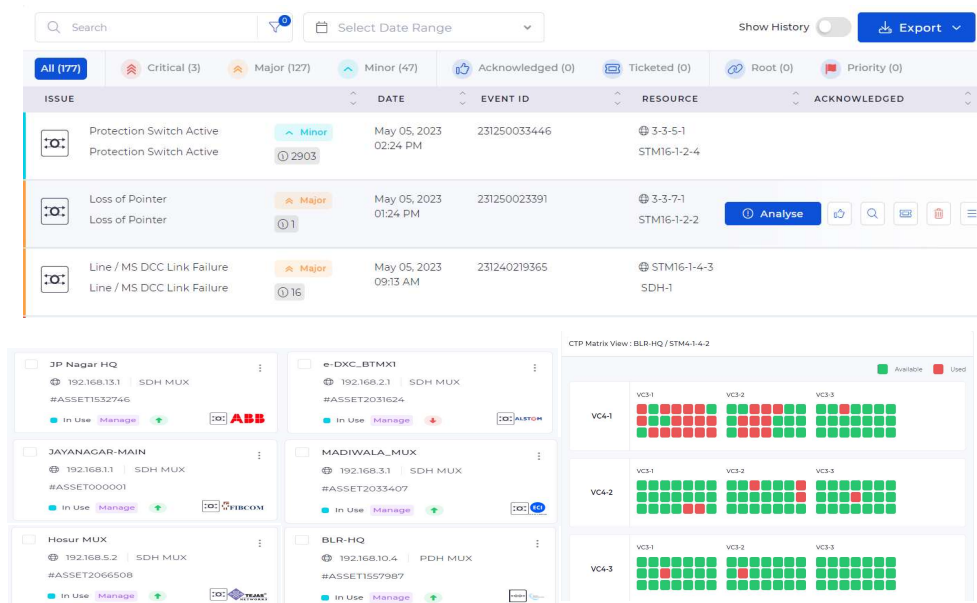
Features List

Fault Management

- Immediate fault detection via polling & collection via traps, EMS/NMS notification channels
- Resynchronization with EMS/NMS
- Scheduled sync as well as on-demand sync of alarms
- Threshold-based Performance Alerts
- Multi-level threshold with color-coded severity types
- ML-based adaptable multi-level thresholds
- Custom messages for each alarm type
- Multi-mode notification with escalation
- In-built auto-correlation mechanism for RCA
- Hold-time support to neglect false alerts
- Instant diagnosis options with auto-correction triggering
- Status propagation to all levels of the network
- Syslog management with extensive filtering and alerting
- Auto-intelligent NOC operation view
- Event Suppression, Grouping, Deduplication
- Rule Engine-driven alarm generation and suppression
- Individual and Grouped alerts with a custom message
- AI Enabled Proactive Fault Management
- Automatic and manual registration of Tickets from the Alarm
- Acknowledgement, Comments, Termination, Diagnostics, and Events filtering from the Operation Console
- Association of Inventory and Performance details

Inventory and Resource Management

- Centralized CMDB comprising IT & Non-IT Assets
- Network/Vendor/Domain Agnostic
- Complete Life-cycle Management
- Industry Standard Protocols Support
- Multi-mode data capturing (Agent & Non-Agent based)
- Direct NE Discovery
- Subnet-based or single-node, or CSV-based bulk Discovery
- EMS/NMS Profile-based Discovery
- Topology Discovery
- Scheduled Discovery and On-demand Rescan
- Capturing and maintaining of NE Information, Topology, Protections, Trails, Circuits, and Services
- Manual feed of Inventory details
- Supporting Primary and Backup Channel Communication
- Inventory reconciliation and change detection
- Auto-merging of network changes of addition or modification
- Audit reports for the complete network
- User-friendly search and filter options
- Circuit Discovery and Circuit Stitching
- Identification and Reporting of Healthy, Idle, and Hanging Circuits
- Inventory & Capacity Usage Reports, such as Card, Port, Ring, and Capacity Utilization



Inventory Tree

- ▼ SHELF-1
 - ▶ Slot-1-0(BackPlane-1-0)
 - ▶ Slot-1-1(SOT18-1-1)
 - ▼ Slot-1-2(XA60G-1-2)
 - STM16-1-2-1
 - STM16-1-2-2
 - STM16-1-2-3
 - STM16-1-2-4
 - ▶ Slot-1-3(SOT18-1-3)
 - ▶ Slot-1-4(XA60G-1-4)
 - ▶ Slot-1-5(CEF1 9P-1-5)
 - ▶ Slot-1-6(CEF1 9P-1-6)
 - Slot-1-7
 - ▶ Slot-1-8(DPU18-1-8)
 - ▶ Slot-1-9(DPU18-1-9)

Features List

Correlation

- Root cause Analysis & Service Impact Analysis
- Topology-based Correlation
- Rule-based Correlation
- Cross-Domain Correlation
- Supporting Closed Loop Automation

Performance Management

- Multi-aspect performance tracking for proactive management, Network performance, System performance, Server performance, Application performance, and Quality of Service
- Maintenance of historical data for in-depth analysis
- Flexible dashboards for multi-angle information
- Multilevel data aggregation of the network
- Extensive performance-based reports
- SLA Tracking with alerts and escalations support

Traffic Flow Analysis

- In-depth analysis of network traffic flow
- Top Links/Hosts/Destinations
- Top Applications/Protocols
- Top Conversations
- Threat detection and alerting
- Packet capture-based traffic analysis

Service Management

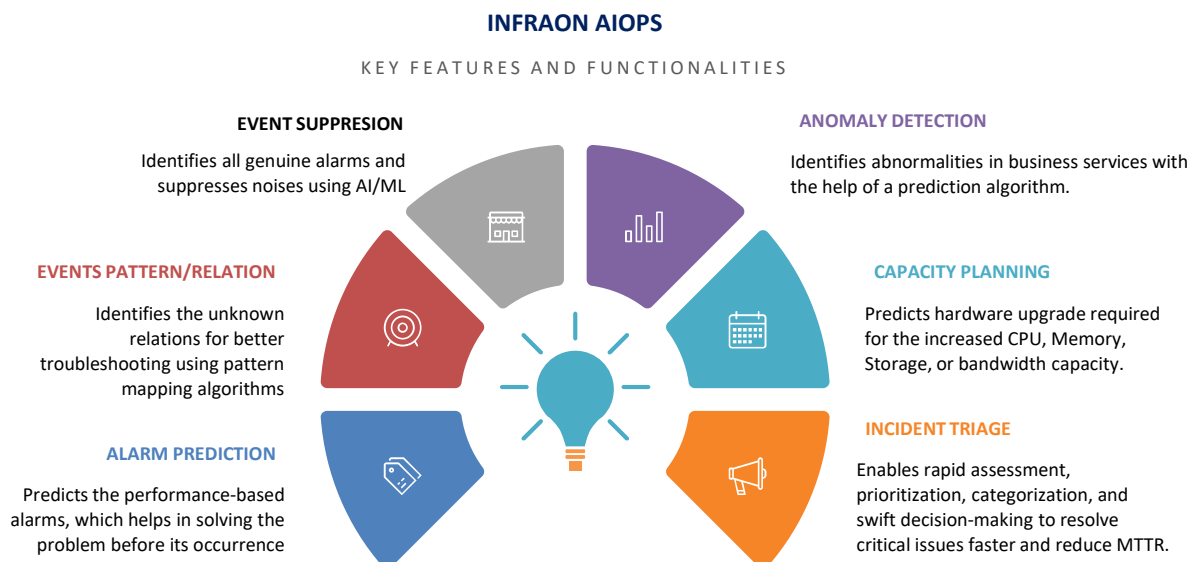
- Circuit Discovery and Customer Service Mapping
- Service Provisioning & Monitoring
- Service Impact Analysis
- Service Profiles and Bandwidth Profiles Management
- Activate/Deactivate Services

Device Configuration Management

- Scheduled backup of Device Configurations
- Download both the startup and running configuration
- Configuration change comparison with color-coded highlighting
- Baseline tagging of stable configurations
- Notifications on configuration changes
- Workflow-based configurations upload & Rollback
- Firmware Upgrade (Single as well as Batch)
- Flexible automation configuration for the routine tasks
- Manual and Auto triggering of the task based on Alert
- Day 0/Day 1 provisioning of devices
- OS level Vulnerability and Policy Management
- Trigger and configure jobs for auto-remediation

Planning and Provisioning

- Capacity Tracking - Used/Available/Reserved
- Modeling of Devices, Components, Topology
- Circuit Planning and Impact Analysis
- Workflow-based Planning
- Path Computation and Path Analysis
- End-to-End Service Provisioning and Activation
- Alerts based on Capacity Usage



Solution Base



Infraon OSS Supported Devices

Network Technologies

Wi-Fi | IP/MPLS | Metro Ethernet | DWDM | GPON | SDH | VoIP | ASON | FTTH | VSAT | RF | IOT

Network Devices

Cisco | Juniper | Huawei | 3Com | HP | D-Link | Edge Core | ZTE | Checkpoint | Mikrotik | Brocade | Avaya | Foundry | Alcatel Routers | Network Printers | Power Backup devices | Broadcom | BDCOM | Cyberoam | Palo Alto and any SNMP supported devices

Optical Network

ECI | Nokia | Tejas | ZTE | Huawei | Calix | Aliphion | Alcatel | Fibcom | GE | Valiant | ABB

Servers

Windows | Unix | Linux | Solaris | IBM AIX | Ubuntu | RedHat | CentOS | SuSE | Debian

Hypervisors

VMWare ESXi | vCenter | XenServer | Nutanix

Applications

.Net | IIS | MS Exchange | Tomcat | MSSQL | MySQL | Oracle | PostgreSQL

Protocols

SNMP v1,v2c,v3 | WMI | SSH | CORBA | XML | REST API | HTTP | TCP/UDP | Syslog | NetFlow v5,v9 | sFlow | LLDP | VoIP | CDP | ARP | BGP | FTP | TFTP | Telnet | TMF 814 | TL1 | Serial | IPv4/v6

Services

DNS | IMAP2 | NTP | SMTP | JBoss | HTTP | HTTPS | POP | NNTP | SNMP | FTP | NFS | Radius | SSH | Oracle | Syslog | ICMP

Device Types

Server | Routers | Switches | Firewall | Load Balancer | SAN | Cluster | Access Controller | Access Point | Satellite Phones | UPS | DMR Handsets | Power Rectifiers | Smart Server Racks | SMPS | SDH | DWDM | CWDM | ASON | OTN | PTN | OLT/ONT | GPON

And capable of adapting to new devices through respective SNMP MIBs & other protocols

Key Monitored Performance Statistics

Network Availability | Application Availability | Resource Availability | Database Availability | Network Utilization | Network Throughput | Error Traffic | Overflow traffic | CPU Utilization | Disk Utilization | Memory Utilization | DB Status | DB Table Space | Connection Count | Aborted Clients | Aborted Connections | Job Run Count | Job Failure Count | Link Uptime | Buffer Overflow | Cache Utilization | Device Port Utilization | Latency | Packet Loss | Jitter | Ping Response Time | Web Response Time | DNS Response Time | Email Response Time | FTP Response Time

And many more...



About EverestIMS Technologies

EverestIMS Technologies Ltd. (Everest) is a leading software company that offers ITOM, AIOps, and OSS solutions. Backed with rich market experience in the I&O, AI, IoT, and digital transformation space, Everest has a widespread global footprint through its focused product portfolio. We provide integrated IT solutions, operations, and infrastructure to empower corporations, enterprises, and telecoms to deliver future-ready services to end-users. We aim to ensure they adapt and stay competitive in evolving digital landscapes.

Certifications: ISO 20000-1:2018, ISO 9001:2015, ISO/IEC 27034-1:2011, ISO/IEC 27001:2013, ISO 55000:2024, ISO 45001:2018 OWASP, SOC II.

Navigate here for more details about us: www.everestims.com



300+

Enterprise Customers



1M+

Services Monitored



5M+

Assets Monitored



100+

Vendors Supported

Reach Us

Phone

+91 80 4656 7100

email

sales@everestims.com

Web

www.everestims.com

Address

Sree Gururaya Mansion, SN 1,
No 759, 8th Main Rd, South
Wing, KSRTC Layout 3rd Phase,
J. P. Nagar, Bengaluru, 560 078.
Karnataka, India

